

Art Lines

A WORLD OF CREATIVE ENDEAVORS

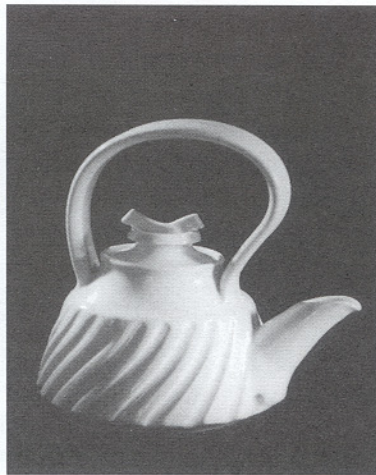
Spring 2001
Volume 1, Issue 2

Tea with Potter Melody Lewis-Kane

Melody's eyes sparkle when she talks about pottery. Her hands work the air, miming the process of wedging and centering lumps of clay, creating an air-shape of a bowl or mug, while wedging words and centering thoughts. Our conversation began with her observations about our tea mugs: their shape, the size and position of the handle. For Melody, choosing a mug for her morning tea from her 50-plus collection is really asking "who will I be having tea with today?" Drinking from a handcrafted mug evokes memories of its maker, of your encounter with that craftsperson.

She "fell in love with clay in 1973 and my passion for it has only grown. In today's fast-paced world... pottery and all handmade objects are even more central to our wholeness of being. The use of handmade objects brings a ritual into our lives that has been lost in the rush of contemporary times."

According to Melody "cooking good food and sharing it with loved ones



always brings pleasure and meaning into our home. Using these objects gives us a moment to reflect on the richness of handmade things, the people who make them, and the beauty they bring to us all." And, "when the pottery I create becomes a special part of someone's every-day routine, there is a sense of connection between us." When someone orders a custom set she talks with them about what they like to eat and cook, how they live and entertain—their answers affect the color and shape of the set she creates for them.

She describes herself as a "maker of things." She values the direct interaction with material: being *with* clay, tending to it (like to a garden), forming shapes by hand or wheel, maintaining the right degree of wetness

for the next step in the process. The tactile sense of when things are just right can be acquired only by doing. The more you put in the more you get out, like raising kids.

To Melody, a mother of four, grandmother of two, family is important. She knows she could make more money if she did more shows or secured more wholesale accounts—but her relationships with family and with her customers are very important to her and getting too big interferes with both.

Ms. Lewis-Kane's functional porcelain ware and her limited edition "feminine form vases" are available at her studio, Clay Form Pottery Sedgwick Maine (207) 359-2320



To submit articles for coming issues of Art Lines ©, please call Mary Ann Solet at 374-2245 or e-mail editor@warringtonhouse.org